

**TO TILE THIS PATTERN PIECE**

Where the piece bleeds over the gridded area, trim the edge from the page so that only the grid remains. Join the pieces near the matching letter using the grid lines to align the pieces. Then cut out the pattern piece.

**3**

oliver + s  
**field trip cargo pants**

BOTTOM-BACK PANEL  
cut 2

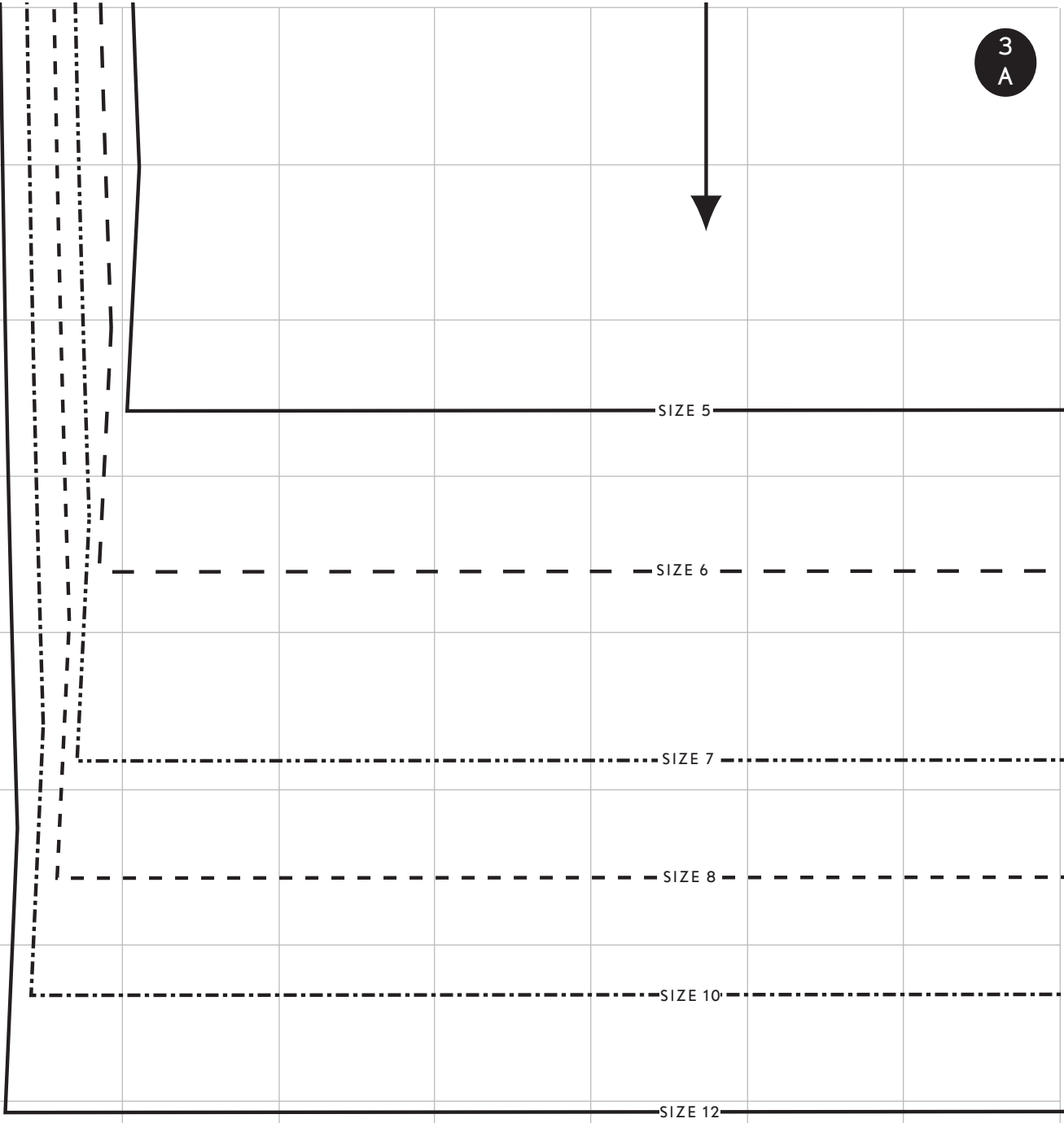
GRAIN

1" TEST SQUARE

On subsequent pages,  
all grid lines form 1"  
squares

**3**  
**A**

3  
A



SIZE 5

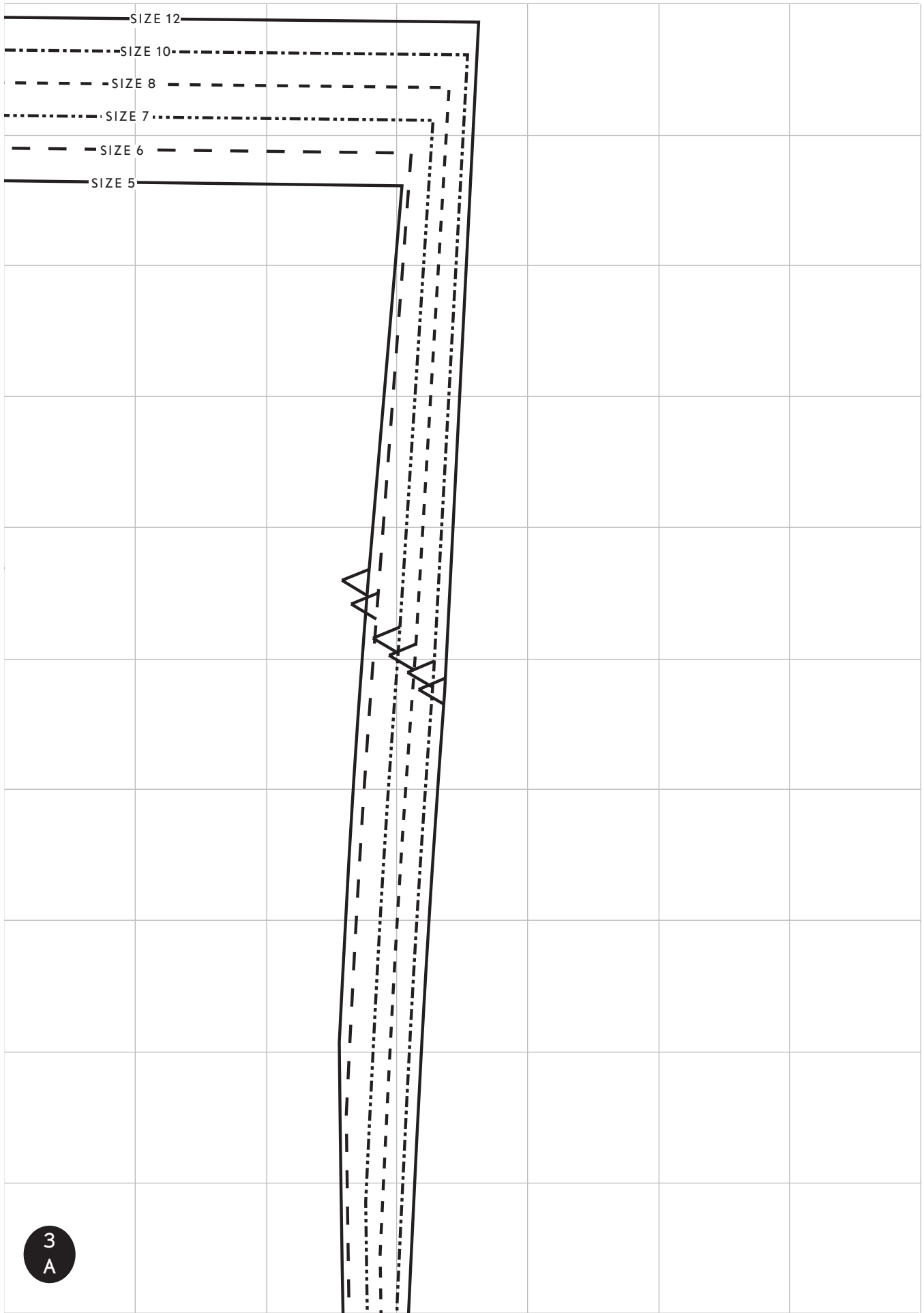
SIZE 6

SIZE 7

SIZE 8

SIZE 10

SIZE 12



SIZE 12

SIZE 10

SIZE 8

SIZE 7

SIZE 6

SIZE 5

3  
A

