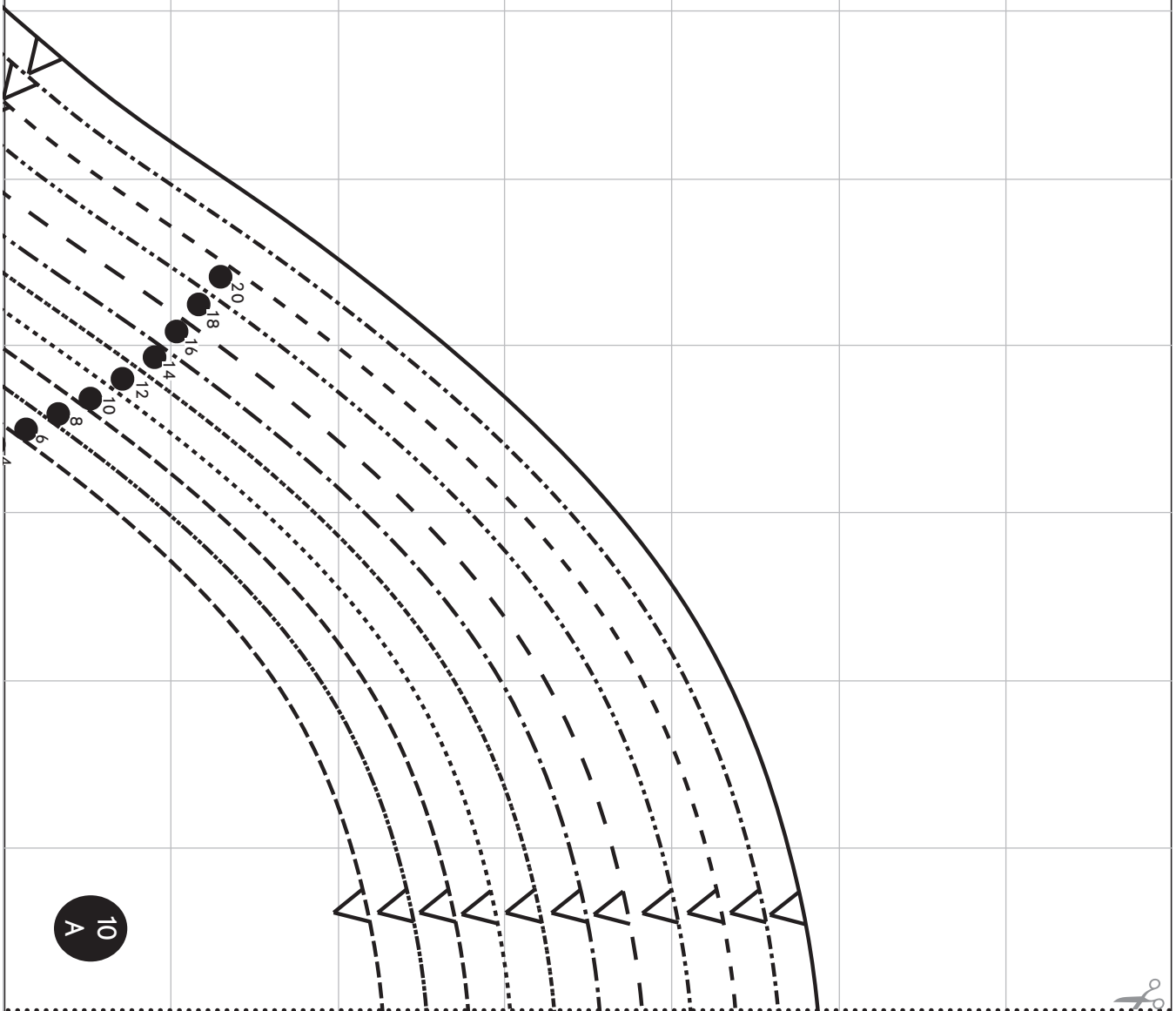
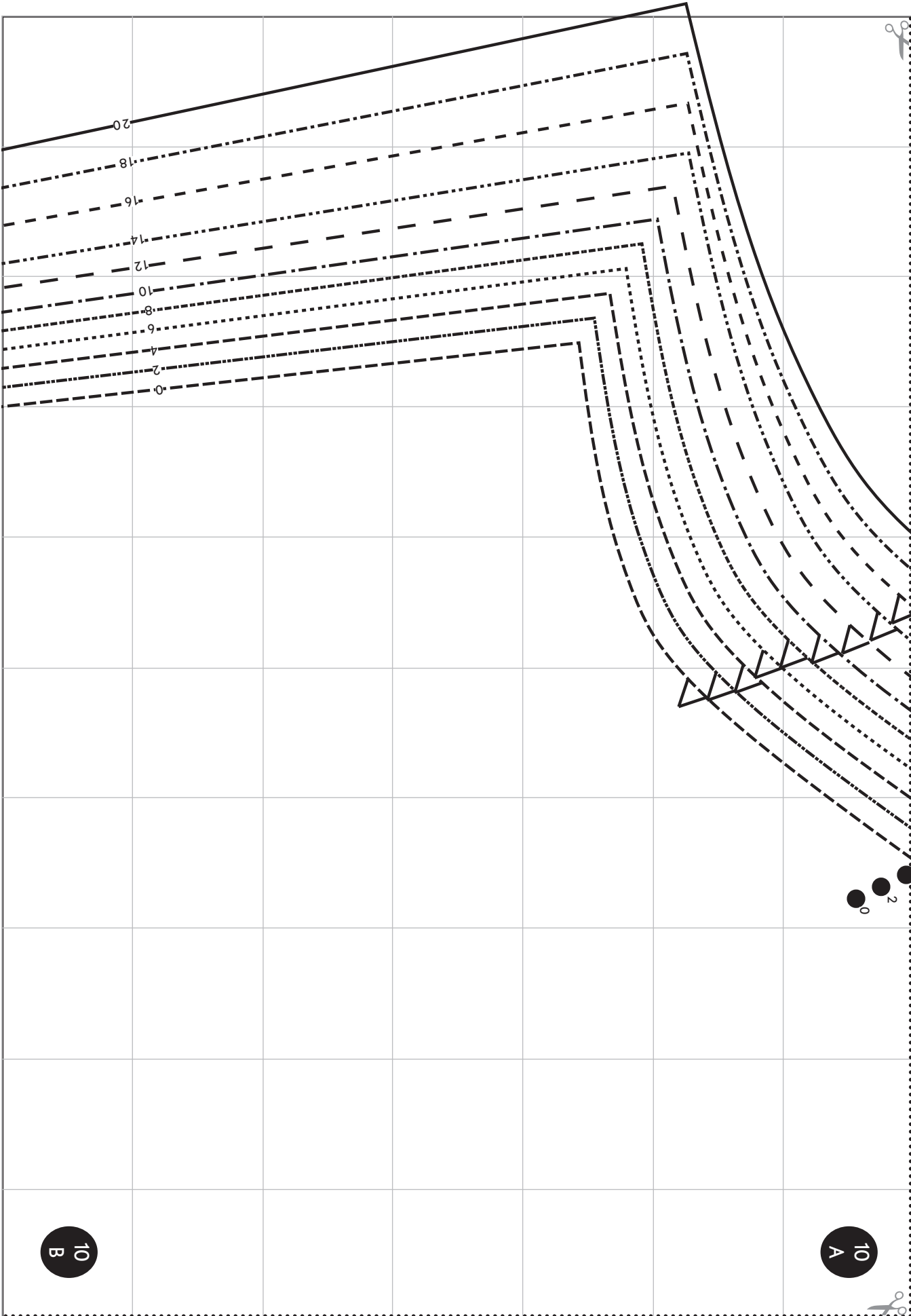
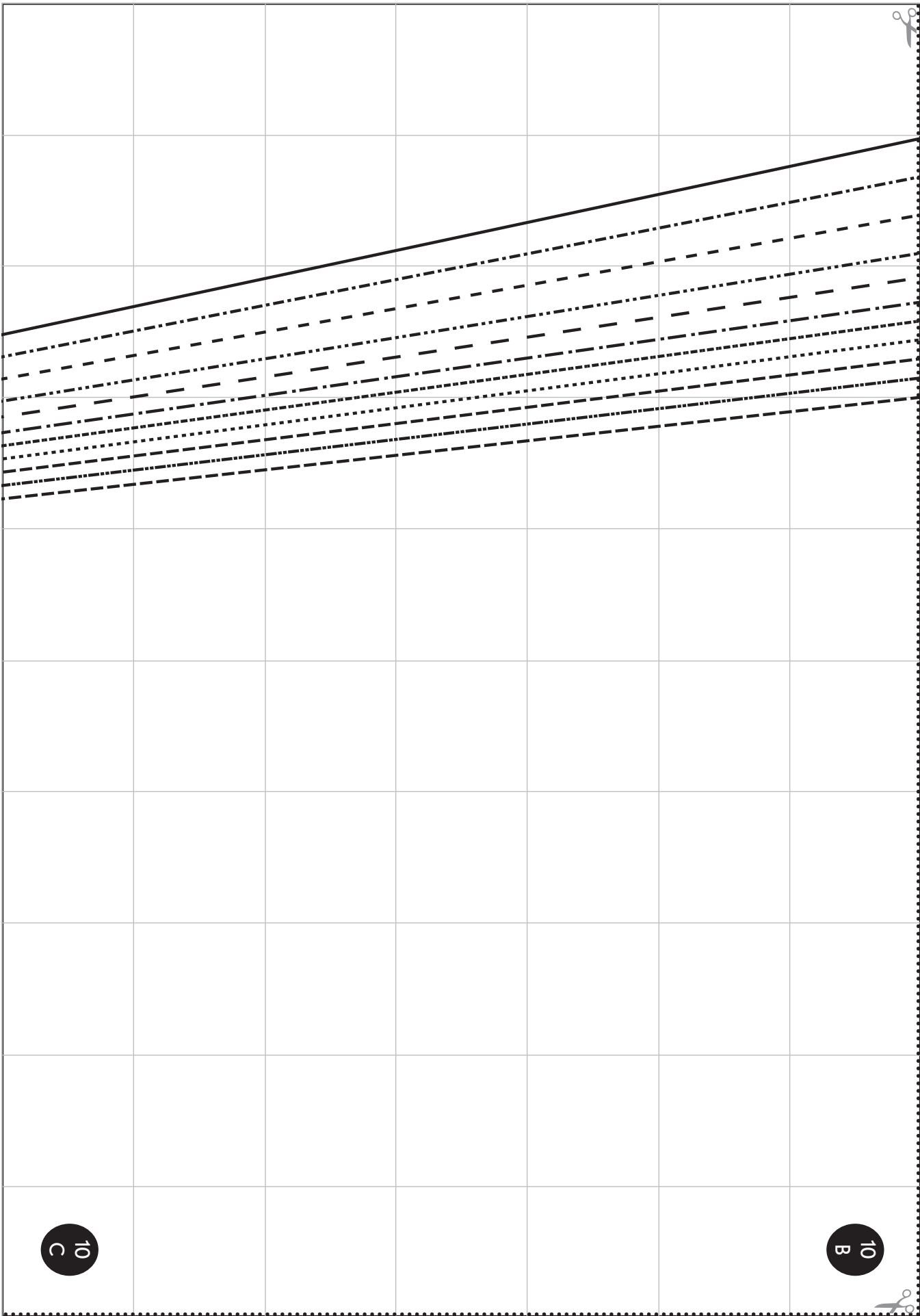


1" Test Square

1. You may print these two replacement pattern pieces on your home printer using either 8 1/2" x 11" or A4 paper.
2. Ensure that the Page Scaling option is set to "None" in the print dialog box before sending the document to the printer.
3. Measure the 1" test square on the first pattern piece page to ensure that your document has printed at the appropriate scale before using the pattern.
4. Cut the pattern pages apart as indicated by the dotted lines. Assemble the tiled pattern pieces by joining them together on the grid lines near the matching letters.

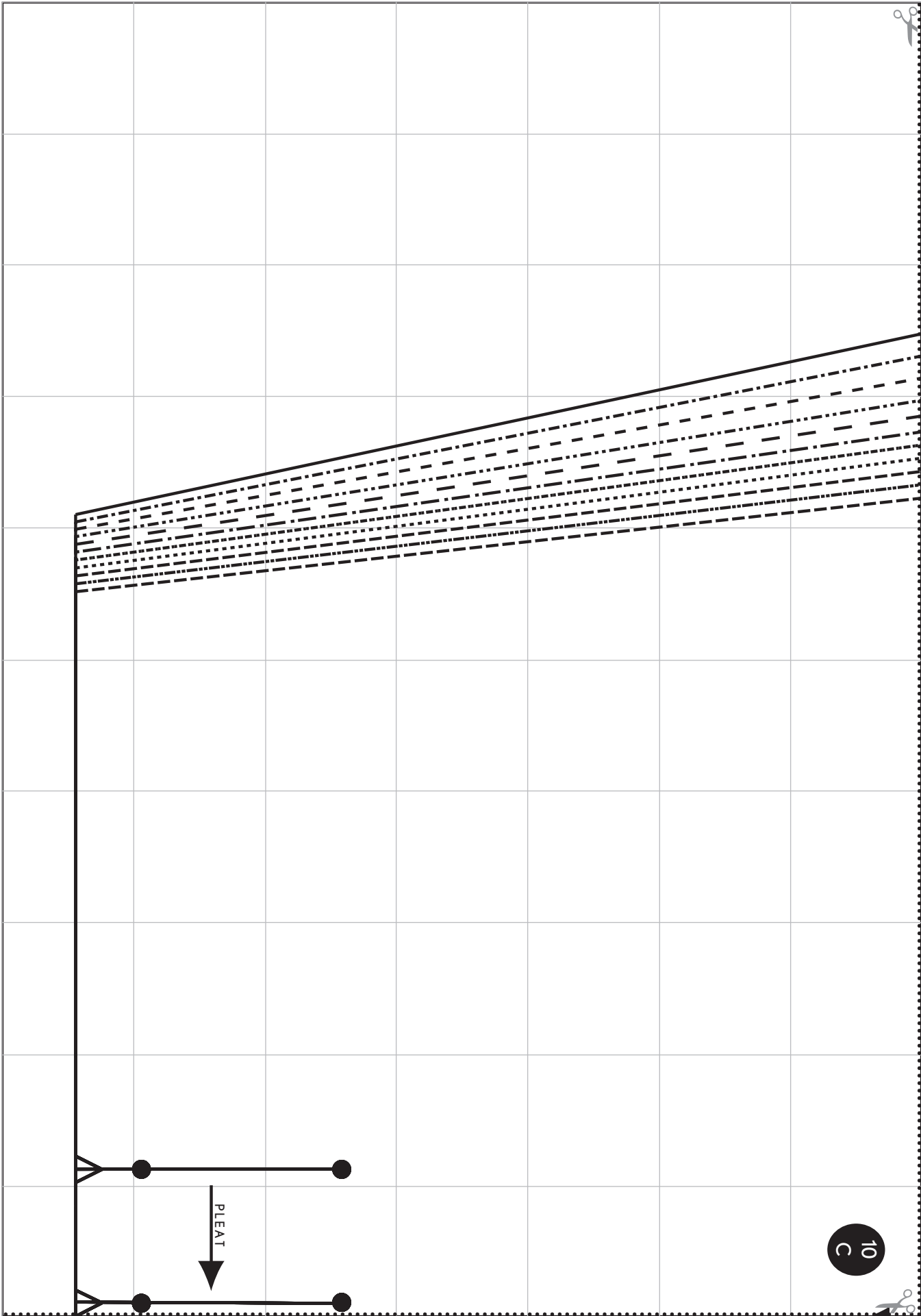






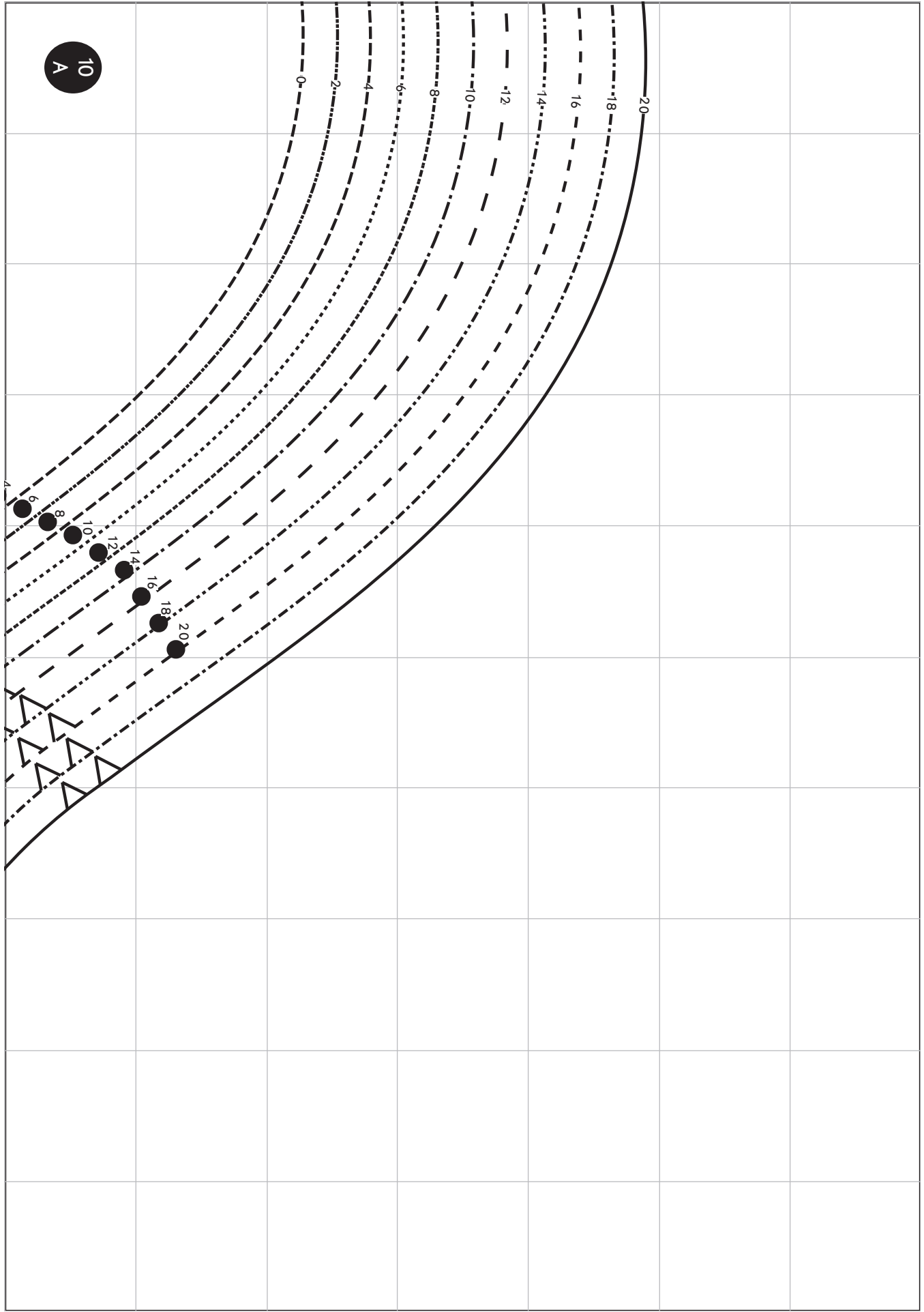
10 C

10 B



10 C

10
A





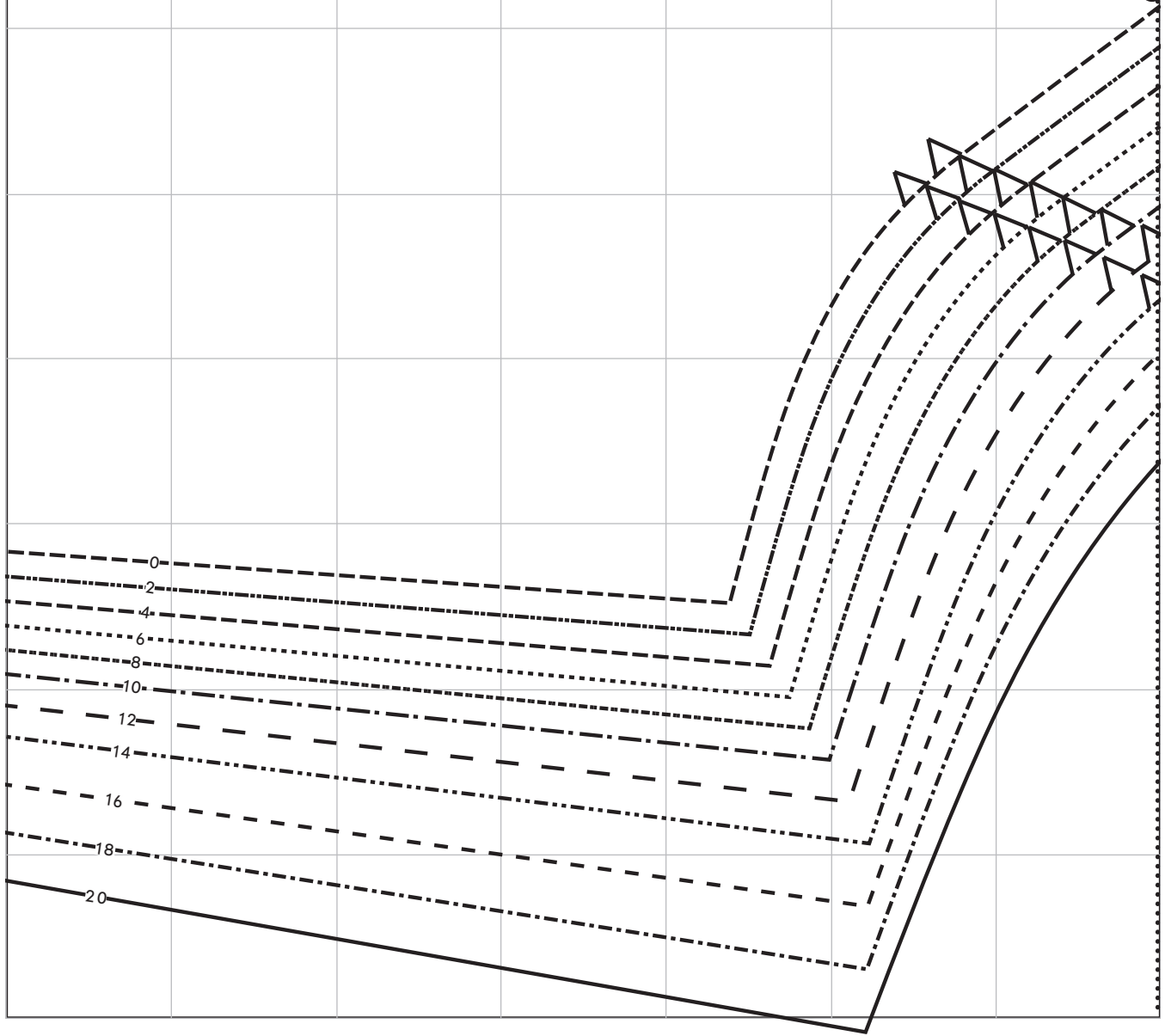
10
A

0
2

10

LIESL + CO.
camp shirt
LONG SLEEVE (VIEW A)
cut 2

10
B

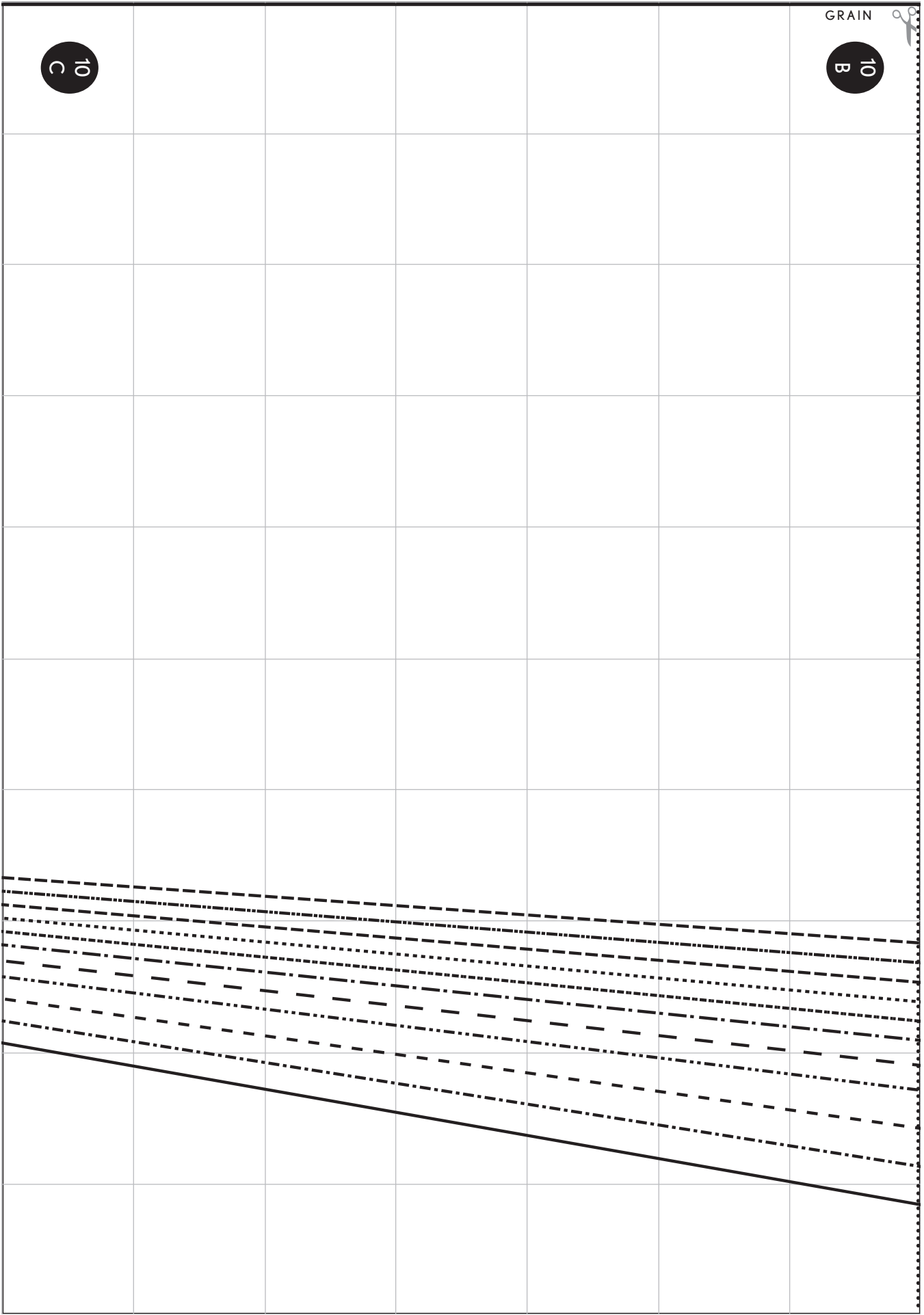


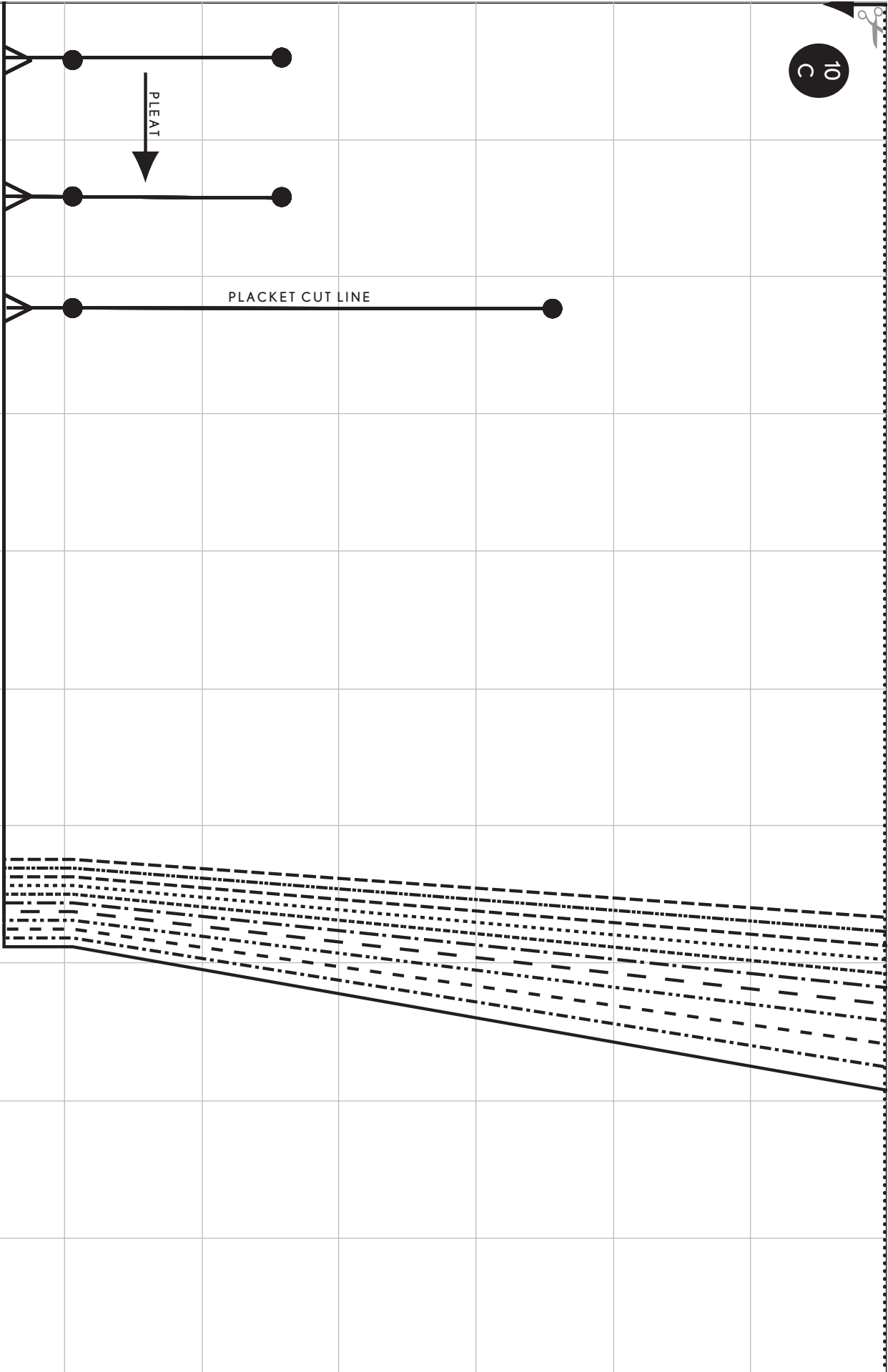
GRAIN

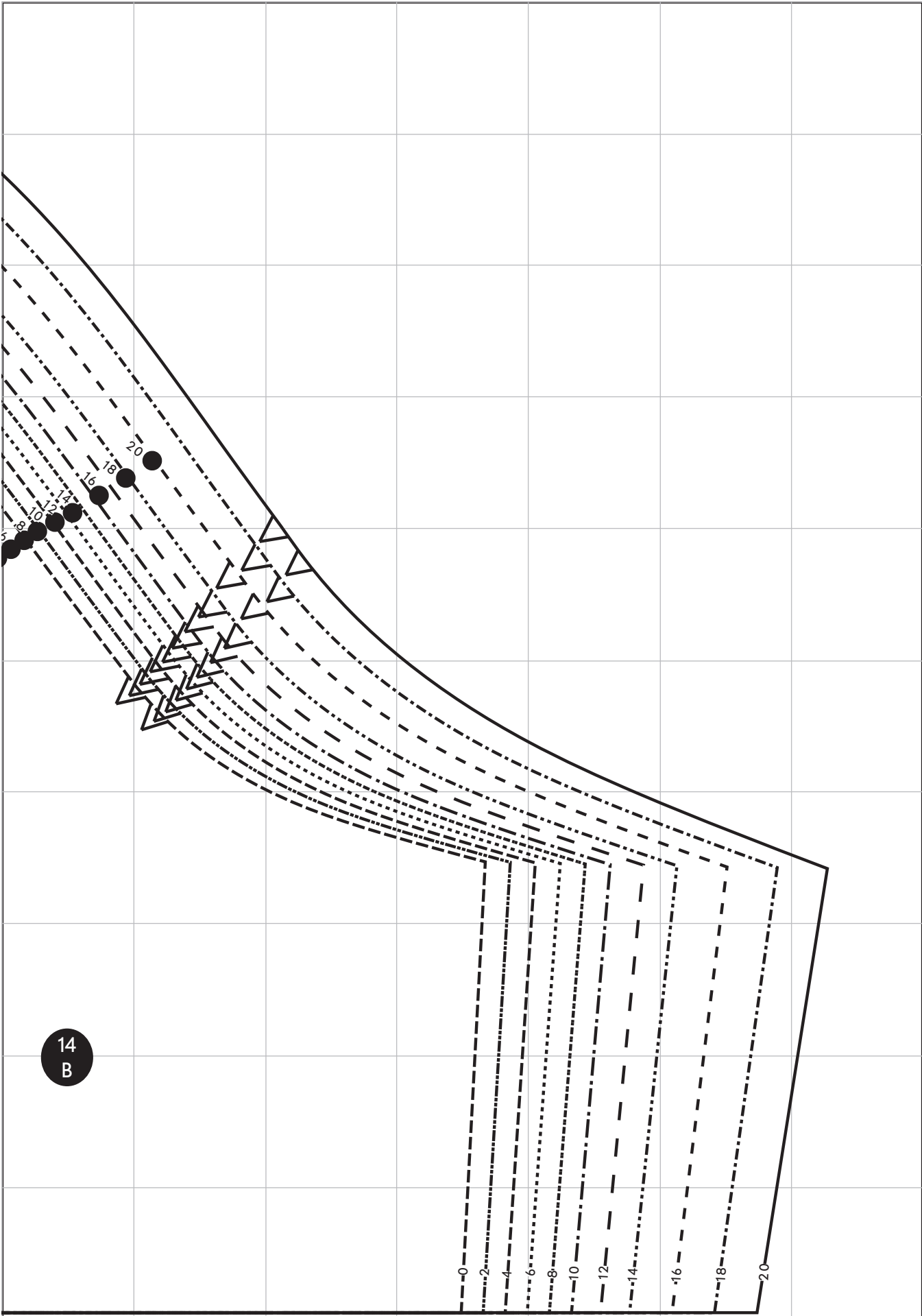


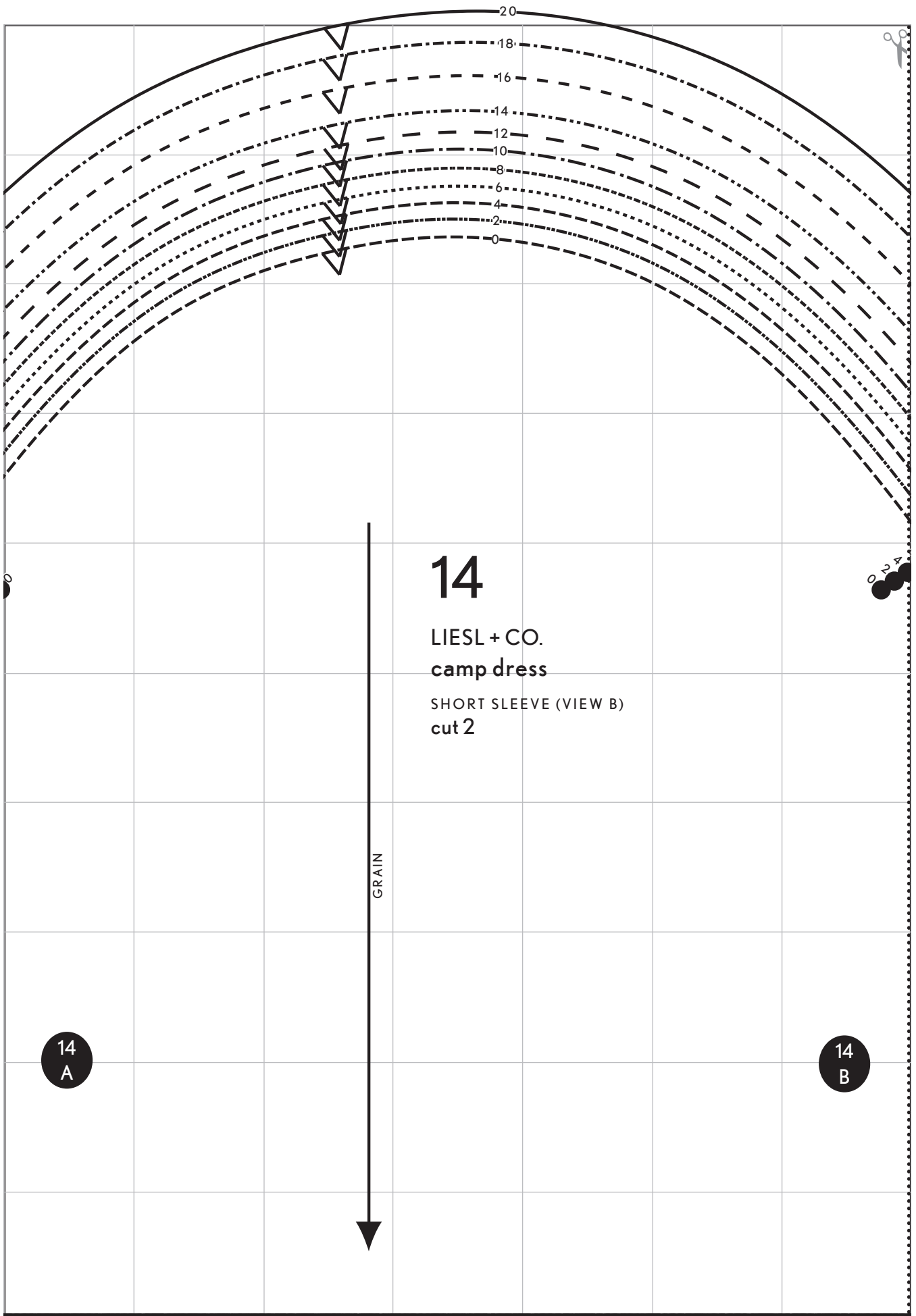
10
C

10
B









14

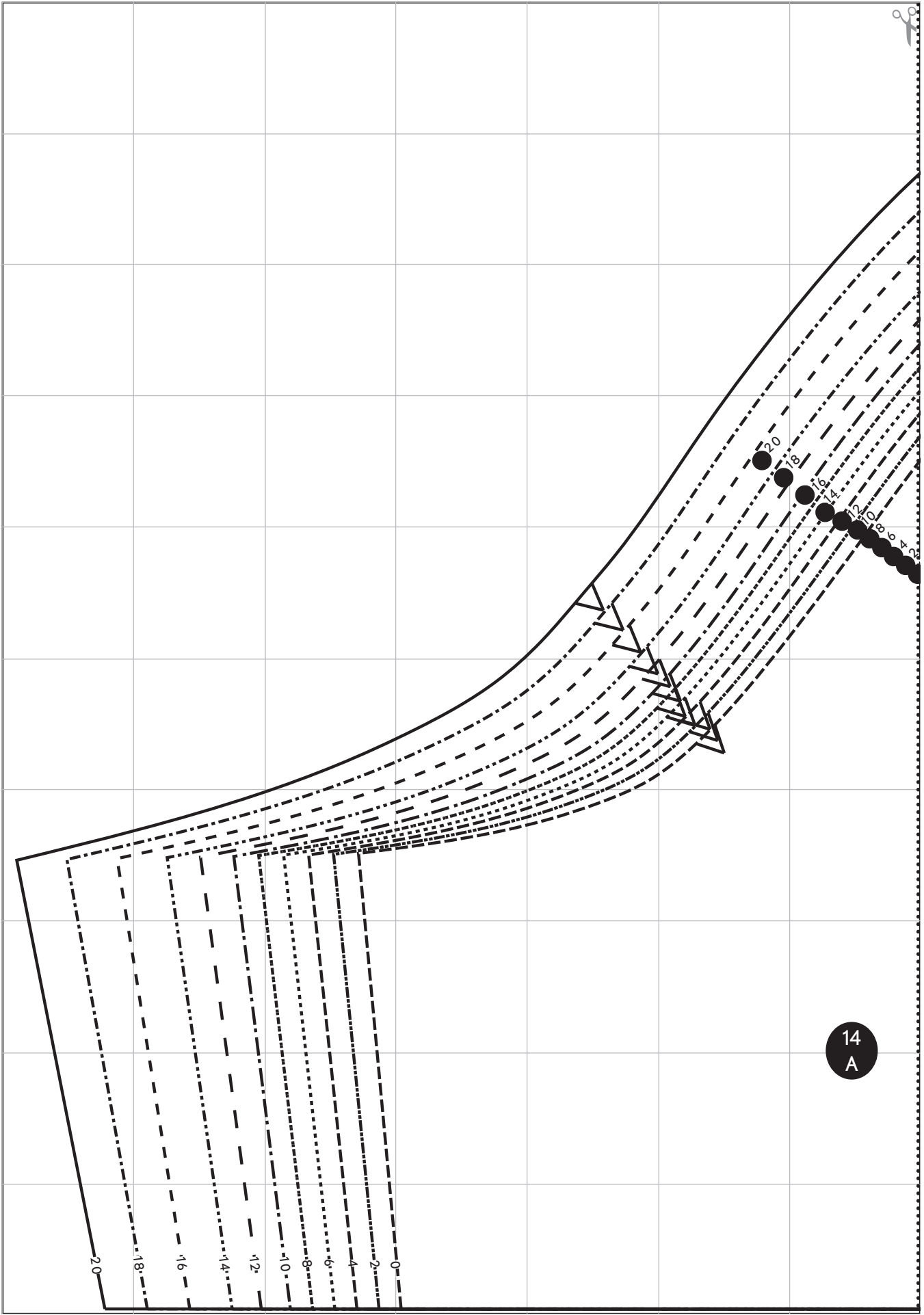
LIESL + CO.
camp dress

SHORT SLEEVE (VIEW B)
cut 2

GRAIN

14
A

14
B



14
A